

Good Neighbors

Preventing Stormwater Pollution:

Help Keep Storm Drain Street Inlets Flowing and Little Pipe Creek Park Watershed Litter Free!



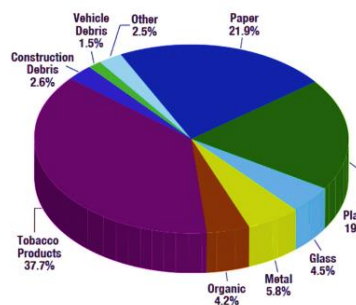
The Town of Union Bridge needs your help to prevent trash and other pollutants from entering and clogging the storm drain inlets in your neighborhood streets and alleyways.

The Town's storm drain system, also known as a Municipal Separate Storm Sewer System (MS4), carries rain and snowmelt away from roads and properties to reduce upland flooding. Unlike the sanitary sewer system, the storm drain system is not connected to the wastewater treatment plant. Rainwater drains through the network of gutters, inlets, and underground pipes, eventually flowing *untreated directly* into the Little Pipe Creek floodplain and waterways.

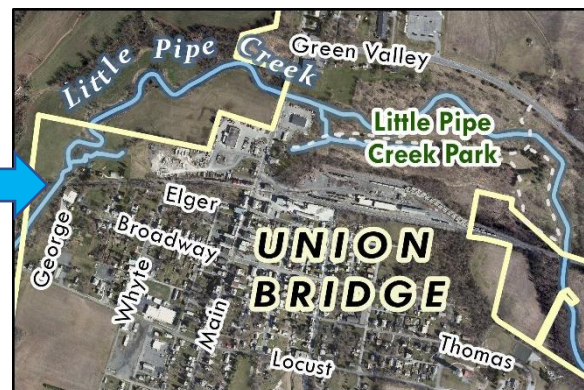
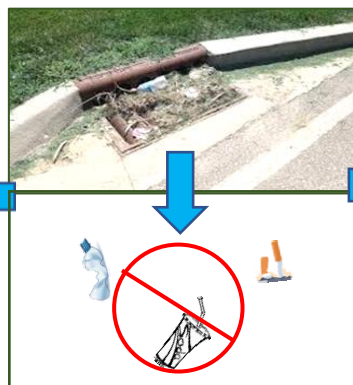


Photo courtesy EPA Region 9 & City of Palo Alto, CA.

Aggregate composition of litter, all U.S. roadways. Photo: Keep America Beautiful



Litter and debris (wrappers, plastic bags, cigarette butts, sediment, grass clippings, leaves, etc.) picked up in rainwater can become stuck in the storm drain system, blocking inlets or pipes causing street flooding. If these (or other pollutants) pass all the way through the system, they are deposited directly into our beautiful Little Pipe Creek Park and floodplain. Litter and associated contaminants, such as bacteria, negatively impact water quality for local wildlife, fishing, recreation, and can affect drinking water quality and the Chesapeake Bay farther downstream.



Common Source of Pollutants	How You Can Help!
Yard Waste (grass clippings/leaves)	Mow 3 -4" high and leave mulched grass clippings on grass. Please remove if on street.
Drink and Food (containers/packaging)	Bag trash (home & carryout) and place in proper containers for landfill. Recycle.
Automotive Fluids (motor oil/antifreeze)	Clean up spills, use absorbents, bag for landfill. Use containers for leaks. Recycle.
Cigarette Butts (32% +/- of all litter)	Dispose in ash trays or cigarette bins, bag for landfill. Do not discard on ground/pavement.
Soaps (equipment/car washing)	Use commercial car wash or wash vehicle on lawn if possible.
Fertilizer/Pesticides/Herbicides	Follow the label, avoid applications if forecast calls for rain.
Pet Waste (public health bacteria pollutant)	When walking your pet remember to have bags for waste pick up and place in trash.
Home Maintenance/Household Cleaners	Properly dispose of paints and other household products safely.
Winter Deicers (chlorides)	Follow the label, shovel early and often, sweep up unused and store for future use.



NPDES/Municipal Separate Storm Sewer Systems (MS4) Stormwater Pollution Prevention

The Town of Union Bridge, Carroll County and the Maryland State Highway Administration are required to protect and maintain the municipal storm drain systems (street inlets, etc.) and waterways from possible pollutants that have the potential to contaminate local watercourses per their National Pollutant Discharge Elimination System (NPDES) Municipal Separate Storm Sewer System (MS4) permit administered by the Maryland Department of the Environment (MDE) and the Environmental Protection Agency (EPA). Contaminants entering the municipal storm drain system are considered pollutants and “illicit discharges” and can be a violation of Carroll County Code Chapter 53 “Environmental Management of Storm Sewer Systems” adopted by the Town. This information is provided to help residents and businesses become aware of the regulations, help keep our storm drain systems working, work together to improve water quality and enjoy our natural resources.

Information and Resources

Union Bridge Town Hall

104 West Locust Street

Union Bridge MD 21791-9132

Phone: (410) 775-2711

Website: www.townofub.org

Email: unionbr@carr.org

Office Hours: Monday thru Friday 8 a.m. to 4:30 p.m.

Other Resource Websites

Town of Union Bridge Services

<https://www.townofub.org/town-services>

Carroll County NPDES Protecting Carroll County Waters:

<https://www.carrollcountymd.gov/government/directory/land-resource-management/protecting-carroll-county-waters-npdes/>

Carroll County Bureau of Resource Management:

<https://www.carrollcountymd.gov/government/directory/land-resource-management/resource-management/>

Carroll County Solid Waste Northern Landfill and Recovery Park:

<https://www.carrollcountymd.gov/government/directory/public-works/solid-waste/>

Carroll County Recycling:

<https://www.carrollcountymd.gov/government/directory/public-works/office-of-recycling/>

Carroll County Household Hazardous Waste Spring Cleanup Event:

<https://www.carrollcountymd.gov/government/directory/public-works/office-of-recycling/recycling-events/household-hazardous-waste-spring-cleanup-event/>

Maryland Department of Transportation/MD State Highway Administration

NPDES MS4 Permit: Educational Outreach, Pollution Control

<https://www.roads.maryland.gov/mdotsha/pages/index.aspx?PageId=48>